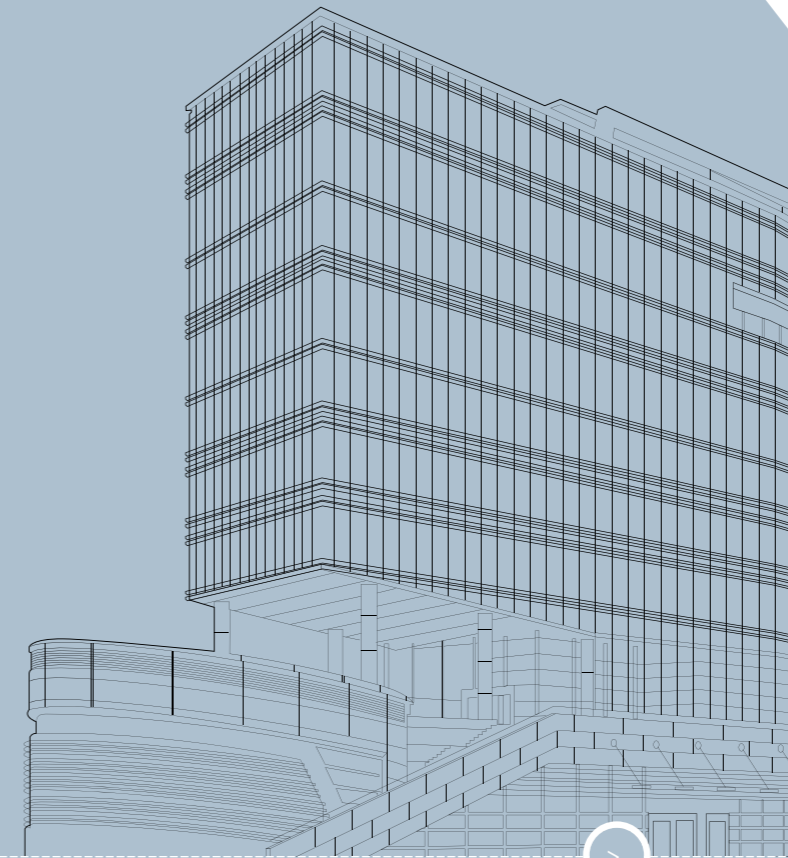


Invest Korea Plaza



300-9, Yomgok-dong, Seocho-gu, Seoul, Korea
www.investkorea.org / Tel: (82-2) 3460-7543/7133 / Fax: (82-2) 3460-7113



The Invest KOREA global network is at your service

■ HEAD OFFICE

Seoul, KOREA
300-9, Yomgok-dong,
Seocho-gu, Seoul, Korea
Tel: (82-2) 3460-7543/7545
Fax: (82-2) 3460-7946/7
www.investkorea.org
Email: ikmaster@kotra.or.kr
for IKP Application:
phjj@kotra.or.kr

■ EUROPE

Frankfurt, GERMANY
Tel: (49-69) 242-9920
Fax: (49-69) 25-3589

Berlin, GERMANY
Tel: (49-30) 2096-2637
Fax: (49-30) 2096-2635

Hamburg, GERMANY
Tel: (49-40) 23-2235/2638
Fax: (49-40) 23-3998

Munich, GERMANY
Tel: (49-89) 2424-2630
Fax: (49-89) 2424-2639

Paris, FRANCE
Tel: (33-1) 55-35-88-88
Fax: (33-1) 55-35-88-89

London, U.K.
Tel: (44-20) 7491-8057
Fax: (44-20) 7491-7913

Brussels, BELGIUM
Tel: (32-2) 203-2142
Fax: (32-2) 203-0751

Milano, ITALY
Tel: (39-02) 795147,
795813, 796384
Fax: (39-02) 798235

Zurich, SWITZERLAND
Tel: (41-1) 202-1232
Fax: (41-1) 202-4318

Oslo, NORWAY
Tel: (47) 23 32 76 50/3
Fax: (47) 22 11 02 70

Stockholm, SWEDEN
Tel: (46-8) 30-80-90
Fax: (46-8) 30-61-90

Copenhagen, DENMARK
Tel: (45) 3312-6658
Fax: (45) 3332-6654

Amsterdam,
NETHERLANDS
Tel: (31-20) 673-0555
Fax: (31-20) 673-6918

Vienna, AUSTRIA
Tel: (43-1) 586-3876
Fax: (43-1) 586-3979

Helsinki, FINLAND
Tel: (358-9) 638122
Fax: (358-9) 638611

■ NORTH AMERICA

New York, U.S.A
Tel: (1-212) 826-0900
Fax: (1-212) 888-4930

Los Angeles, U.S.A
Tel: (1-323) 954-9500
Fax: (1-323) 954-1707

Chicago, U.S.A
Tel: (1-312) 644-4323
Fax: (1-312) 644-4879

Dallas, U.S.A
Tel: (1-972) 243-9300
Fax: (1-972) 243-9301

Washington D.C., U.S.A
Tel: (1-202) 857-7919
Fax: (1-202) 857-7923

San Francisco, U.S.A
Tel: (1-650) 571-8483
Fax: (1-650) 571-8065

Atlanta, U.S.A
Tel: (1-770) 508-0808
Fax: (1-770) 508-0801

Miami, U.S.A
Tel: (1-305) 374-4648
Fax: (1-305) 375-9332

Detroit, U.S.A
Tel: (1-248) 355-4911
Fax: (1-248) 355-9002

Toronto, CANADA
Tel: (1-416) 368-3399
Fax: (1-416) 368-2893

Vancouver, CANADA
Tel: (1-604) 683-1820
Fax: (1-604) 687-6249

■ ASIA & OCEANIA

Singapore
Tel: (65) 6221-3055
Fax: (65) 6223-5850

Sydney, AUSTRALIA
Tel: (61-2) 9299-1790
Fax: (61-2) 9299-1792

Melbourne, AUSTRALIA
Tel: (61-3) 9699-3833
Fax: (61-3) 9699-3811

■ JAPAN

Tokyo
Tel: (81-3) 3214-6951
Fax: (81-3) 3214-6950

Osaka
Tel: (81-6) 6262-3831
Fax: (81-6) 6262-4607

Nagoya
Tel: (81-52) 561-3936
Fax: (81-52) 561-3945

Fukuoka
Tel: (81-92) 473-2005
Fax: (81-92) 473-2007

■ CHINA

Shanghai
Tel: (86-21) 6219-7592
Fax: (86-21) 6219-6015

Hong Kong
Tel: (85-2) 2545-9500
Fax: (85-2) 2815-0487

Taipei, TAIWAN
Tel: (886-2) 2725-2324
Fax: (886-2) 2757-7240



KOTRA IKP Project Department
Address: 300-9 Yomgok-dong Seocho-gu, Seoul (Postal code: 137-749)
Phone: (02) 3460-7130/1 (IKP Establishment Team)
 (02) 3460-7133 (IKP Operations Team)
Fax: (02) 3460-7113

- 04 **05** Korea, hub of Northeast Asia
- 06 **07** Invest Korea Plaza (IKP)
- 08 **09** An Optimal Location
- 10 **11** State-of-the-art Office Environment
- 12 **13** International Standard Facilities
- 14 **15** One-stop Service
- 16 **17** 설립개요
- 18 **19** IKP 소개

Foreign Enterprise Business Incubation Center / Supporting Your Success in Korea
Invest Korea Plaza ...▶▶▶▶▶

▶ 시작부터 끝까지 함께 하는 "원스톱 서비스"

투자의 타당성에 대한 조사, 투자 파트너 발굴 등 초기 투자 상담부터 조세 및 관세 감면 절차, 법인설립절차 등 전문분야 상담, 공장부지 선정 및 매입을 위한 현장지원, 공장설립 인가 등 인허가 절차의 직접 및 일괄대행처리 등의 행정지원, 투자자의 국내 정착을 위한 생활여건 상담 등의 사후관리까지 종합적인 원스톱 일대일 밀착서비스제공합니다.

[생활정착지원시설]

- > 경제, 문화, 역사, 지리, 지역풍습 전반을 소개하는 한국생활 안내관 설치
- > 교육, 의료, 주거, 교통, 출입국 서비스 뿐만 아니라 여행, 금융, 쇼핑 등 생활 정착에 필요한 상담지원

▶ 만족한 편의시설

외국인 투자자들의 일상적인 편의와 비즈니스의 효율을 높이기 위한 휴식시간 활용의 효율성을 높이기 위하여 각종 편의시설을 마련하였습니다.

▶▶▶ 비즈니스라운지

방문객과 내부인의 간단한 회의 및 미팅을 위한 장소로서 외국인과 방문객의 편의를 위한 리셉션 기능을 한다. 2층 Deck에서 직접접입이 가능하므로 접근성이 용이하고 외부공간과 연계한 다양한 공간 활용 가능하다.

▶▶▶ 스낵바

비즈니스 라운지와 연계되어있고 2층 데크 및 로비에서 접근이 용이하다. 입주자 및 내방객을 위해 커피 및 간식서비스를 제공한다.

▶▶▶ 투자종합홍보관

다양한 홍보 및 전시와 박람회 등의 행사를 수용하기 위한 Open Plan으로 외국인 및 일반인을 위한 동영상, 멀티미디어 등의 매체를 갖추고 있다.

▶▶▶ 생활안내관

한국의 문화와 풍습을 느낄 수 있는 디자인 요소를 적극 활용하여 한국에 정착, 투자하려는 외국인에게 한국 생활 정보를 제공한다.

▶▶▶ 비즈니스 센터

투자 업무처리에 필수적인 회계, 법률사무소, 은행, 관령회사 등을 유치하여 일괄업무처리를 지원한다. 외국기업전용사무실과 인접 배치해 긴밀한 서비스가 용이하다.

▶▶▶ IBS(Intelligent Building System)

효율적인 사무환경을 위한 Access Floor를 설치하고, 초고속 정보통신건물 2등급 기준 적용으로 빠르고 편리한 통신설비를 구축했다.

▶▶▶ 보안 시스템

보안등급에 따라 차등 적용하는 RF-CARD 시스템을 구축하여 기능별 ZONE에 따른 출입자를 통제하고 One Card 시스템으로 근무자에게 편의를 제공한다.

▶▶▶ 화상 회의 시스템

본사 및 타 국가 회의가 가능한 영상 회의실을 갖추고 고화질 LCD 프로젝터를 이용한 영상지원과 마이크를 이용한 발표 및 회의를 지원하며 스위치 조작으로 프로젝터 및 스크린을 쉽게 이용할 수 있다.

▶▶▶ 상담실

교육·의료에서 출입국 서비스에 이르는 각종 현지 정착 안내 및 지원을 한다.

※ 그 외에 불규칙한 업무시간 및 시차적응을 위한 간이 수면시설, 각 층별 샤워실 및 휴게실, 체력단련을 위한 Fitness Center, 매점·의무실·이발소·문구점 등

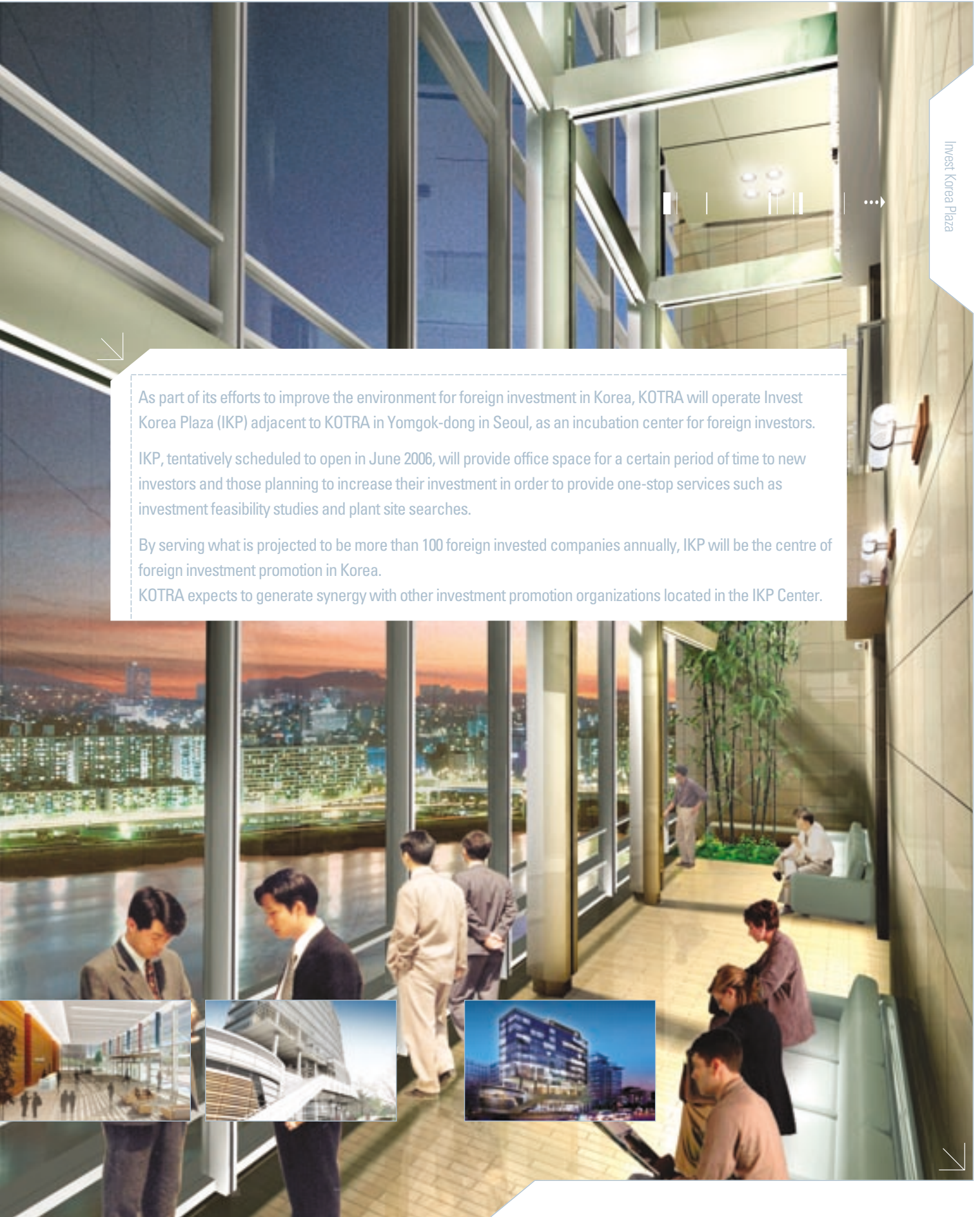


As part of its efforts to improve the environment for foreign investment in Korea, KOTRA will operate Invest Korea Plaza (IKP) adjacent to KOTRA in Yomgok-dong in Seoul, as an incubation center for foreign investors.

IKP, tentatively scheduled to open in June 2006, will provide office space for a certain period of time to new investors and those planning to increase their investment in order to provide one-stop services such as investment feasibility studies and plant site searches.

By serving what is projected to be more than 100 foreign invested companies annually, IKP will be the centre of foreign investment promotion in Korea.

KOTRA expects to generate synergy with other investment promotion organizations located in the IKP Center.



Korea, hub of Northeast Asia



Major Investors ...

Europe



Japan



U.S.A.



Site Support

- Free Economic Zones (FEZ)
- Foreign-exclusive Industrial Complexes
- Free Trade Zones
- Foreign Investment Zones
- Jeju Free International City
- International Airport
- Commercial Port

Korea, hub of Northeast Asia

- Situated at the heart of dynamic Northeast Asia with its immense market and unlimited potential
- Advantage of geographical proximity to China, the largest market in the world, and Japan, the second-largest economy in the world.
- Korea acts a bridge to China as bilateral trade soars following Chinese accession to the WTO
- Increasing cooperation among Korea, China and Japan is allowing transnational companies to diversify their regional activities

Foreign-Exclusive Industrial Complexes

- > Provides plant sites at inexpensive prices
- > Also welcomes FDI by SMEs

Foreign Investment Zones

- > Designated by local governments as a particular area where foreign corporations wish to invest

Free Economic Zones

- > Provides special legal status to foreign investors
- > Major features: deregulation, labor market flexibility, convenient living conditions

Free Trade Zones

- > Where business activities can be pursued without the legal requirements demanded under Foreign Trade Act and the Customs Tax Act

Jeju Free International City

- > Established to attract investment into local high-tech and leisure industries



Invest Korea Plaza (IKP)

Korea's International Business
Building the



Incubation Center Foundation for Business Success

By locating initially at IKP, an international business will receive all the necessary support to underpin its success in Korea

IKP aims to provide a professional, business location for foreign investors seeking to locate or expand their business activities in Korea

06 < > 07





An Optimal Location

An Optimal Location

Situated in the prestigious Seocho area of Seoul, Invest Korea Plaza offers investors the benefits of one of the most advantageous business locations in Korea



☐ >> **Ideal Investment Support Environment**

Located adjacent to KOTRA head office, businesses locating in IKP may easily access the one-stop investor services provided by Invest Korea, the national investment promotion agency

☐ >> **Convenient Transportation**

IKP is close to Yangjae IC, the major access point of the Seoul-Busan Expressway and 10 minutes by bus from Yangjae subway station on Line No.3, where many transnational head offices are clustered

☐ >> **International Residential Complex**

A residential complex featuring a full range of modern amenities will open in the vicinity during 2007





State-of-the-art Office Environment

State-of-the-art Office Environment

IKP offers a sophisticated international business environment, outstanding conference facilities, security systems, and super-speed telecommunications facilities have been established to provide a superlative level of service



□ >> **Top-level security**

An IBS System will be in effect to guarantee access only to security-cleared RF card holders

□ >> **Outstanding conference facilities**

IKP's conference facilities include a suite of four conference rooms, seminar room, operations room, video conferencing system, high-definition LCD projector capability, and orientation rooms of various sizes

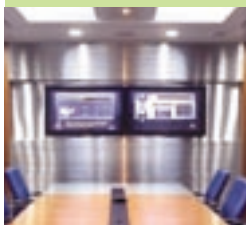
□ >> **Super-speed telecommunications facilities**

The plaza offers tenants unparalleled telecommunications facilities including a mobile LAN system to ensure rapid and convenient Internet access



International-standard Facilities

The high quality of facilities at the disposal of IKP tenants will enhance their business efficiency and add to their quality of life



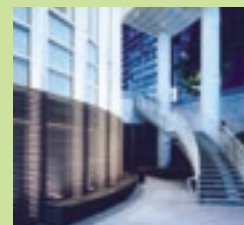
Video Conferencing System

The video conferencing room supports meetings with tenants' headquarters or overseas offices with its audiovisual equipment such as its high-resolution LCD projectors and public address system, while simple switch controls operate the projector and the screen.



Security System

An RF card entry system will be installed to allow access to different zones depending on a visitor's level of security clearance, while the one-card system affords convenience for those wishing to access the building.



Intelligent Building System

Its high-speed telecommunications and security system will mark IKP as one of the most advanced intelligent buildings in East Asia.



Business Center

The Business Center will house service providers such as accounting and legal firms as well as banks and travel agencies to allow one-stop service. They will be placed near the offices of international entrepreneurs for easy access.



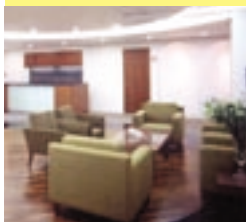
Cultural Information Center

The center is decorated with historical cultural motifs and provides information on culture and on living in Korea to foreign residents directly involved in inbound investment.



Information Center

The Information Center provides support for localization including referral and information services in the areas of education, medical services and port entry.



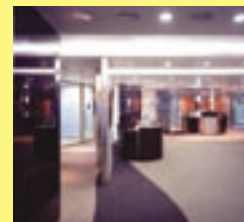
Business Lounge

Serves as a place where business meetings or small conferences may be held as well as a reception area for international visitors. It is directly accessible from the main desk on the second floor, and available for a variety of uses in conjunction with the outside area.



Snack Bar

Linked with the Business Lounge and easily accessible from the deck on the second floor or the lobby. Coffee and light meals are available from the snack bar.



General Investment Relations Center

The center has an open floor for flexibility in holding various public relations events, exhibitions and conventions. It is equipped with an advanced audiovisual and multimedia system for international and domestic guests.



Public

2F Business Lounge / Living in Korea
Guidance Corner / Snack Bar / Deck
1F Lobby / Seminar Room / Korea
Investment Promotion Room
B1 Parking lot / Building Management
Facilities



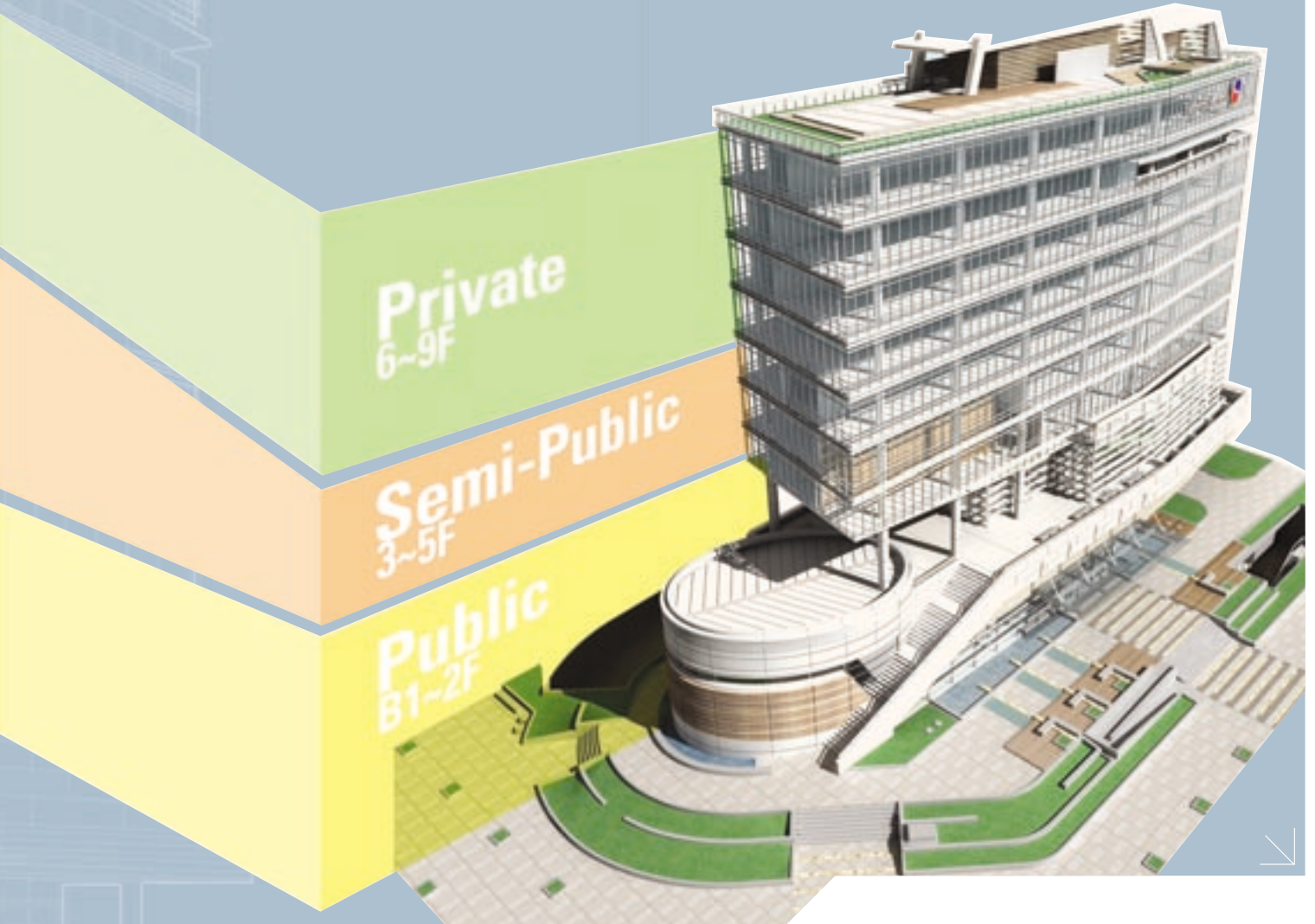
Semi-Public (Business Support)

5F Related Agency Offices / Investor
Consultation Center
4F Business Center
3F Orientation Room / Small
Conference Room



Private (Business Incubation Center)

9F Multinational Exclusive Office / Video
Conference Room
7, 8F Multinational Exclusive Office
6F Investor Consultation Room /
Computer Lab / Operating Room






One-stop Service from First Contact to Startup

- Comprehensive one-stop service
- Professional consulting and provision of investment information at the initial stage for help on securing tariff reductions and exemptions, and completing incorporation procedures
- Support for plant site searches
- Package service for approvals and permits concerning plant construction
- Settlement assistance for foreign corporate personnel and their families

••• Settlement Support Facilities

- > Korean Life Guidance Corner: economy, culture, history, geography, local customs
 - > Information and support on living in Korea: education, health care, housing, transportation, visas, travel, finance and shopping information
- 

□ >> Investment consulting phase

collects necessary information for investment legitimacy, searches for investment partners, and professionally consults for purposes of sole investment, joint investment, mergers & acquisitions, real estate investment and for legal, accounting and tax issues.

□ >> Administrative support phase

arranges consultations between foreign investors and domestic partners, and registers foreign investment report. Searches for ideal plant sites in line with investors' preferences and provides necessary administrative support. Provides services related to approval and permission necessary for investment, and arranges discussions between foreign investors and domestic government agencies, municipalities and domestic enterprises.

□ >> Follow-up measures

designates a home doctor for foreign investor enterprises to provide all necessary after service. Provides living tips to assist the stable settlement of foreign employees and their families in Korea in such areas as housing and international schooling.

14 < > 15



>> Investment Information Exchange Center

Package service. Offers all various professional investment-related information necessary regarding the investment environment and procedures in Korea in conjunction with a host of investment-related administrative agencies housed within.



>Project manager designated for one-on-one service. Project managers are dispatched from various government administrative departments including KOTRA, Ministry of Commerce, Industry and Energy, the National Tax Service and the municipalities.

>will house a number of foreign chambers of commerce to provide close support

>Korea Investment Promotion Room for introducing investment environment and procedures in Korea

>Business Lounge for meetings with visitors and investment professionals

>Package service provided by accounting/legal firms, interpretation/translation agencies, banks and travel agencies necessary to support the foreign investment promotion effort in Korea in conjunction with a host of investment-related administrative agencies



들어서는 순간, 성공을 확신할 수 있는
외국기업 창업지원 연구센터



Invest Korea Plaza

KOTRA에서는 외국기업 투자유치환경 개선의 일환으로
염곡동 KOTRA 사옥 인접 부지에 외국 투자기업 인큐베이팅
시설인 “외국기업 창업지원 연구센터(IKP; Invest Korea Plaza)”를 건립합니다.

2006년 6월경에 완공예정인 동 센터는 KOTRA 해외무역관을 통해 유치한
신규 외국인 투자기업이나 증액투자를 계획하고 있는 기존 투자업체에게
일정기간동안 전용사무실을 제공하여 투자타당성조사 및 투자지역 선정 등
업무를 One-Stop 서비스하는 시설입니다.

연간 100여개사 외투기업이 입주하는 IKP센터는
명실상부한 한국 최초의 외국인 투자유치의 메카가 될 것입니다.
지자체나 협회 등의 투자유치단 사무실이 입주하면 큰 효과가 기대됩니다.

문의처:

KOTRA IKP 사업단

주소: 서울 서초구 염곡동 300-9(우 137-749)

전화: (02)3460-7130/1 (IKP건립팀)

(02)3460-7133 (IKP운영팀)

팩스: (02)3460-7910



최적의 지리적 조건(입지조건)

비즈니스의 성공여부를 결정하는 첫 번째는 바로 "입지조건"입니다. 외국기업의 성공적인 투자와 보다 효율적인 투자지원을 위해 철저하게 분석하고 치밀하게 계산하여 위치를 선정했습니다.

- ... 완벽한 투자지원 환경: KOTRA 본사 사옥 옆에 위치하여 외국인투자전문기관인 Invest Korea의 원스톱 서비스를 보다 편리하게 제공받을 수 있습니다.
- ... 편리한 교통: 경부고속도로의 서울 관문인 양재 IC가 근접해 있고, 서울 지하철 3호선 양재역에서 버스로 10분 거리에 위치해 있습니다.
- ... 외국인임대타운: 2007년 인근지역에 외국인 임대 타운의 건립이 계획되어 있습니다.

최첨단 사무환경

국제적이고 첨단화된 사무환경을 조성하기 위해 IBS시스템을 비롯한 각종 보안시스템, 다양한 회의시설, 초고속 통신설비를 구축하여 한 차원 더 높은 서비스를 제공하고 있습니다.

- ... 첨단시스템안바: 쾌적한 사무환경을 위한 IBS 시스템, 안전한 투자연구환경을 위한 RF-Card 시스템, One Card 시스템 등
- ... 다양한 회의시설: 국제적인 영상회의를 위한 화상회의 시스템(고화질 LCD 프로젝터 영상 설비)을 비롯해 소회의실 4개, 세미나실, 오리엔테이션 룸 등
- ... 초고속 통신설비: 초고속 정보 통신 건물 2등급 기준의 빠르고 편리한 통신설비가 설치, 무선 LAN 시스템 구축

투자정보 교류의 중심지

다수의 투자유치 행정기관이 입주하여 한국의 투자환경, 투자절차 등 각 기관의 다양하고 전문화된 투자관련 정보를 제공하고, 투자업무 처리에 필수적인 모든 절차를 일괄처리하여 지원해 드립니다.

- ... KOTRA, 산업자원부, 국세청 등 정부 각 행정부처와 광역지방자치단체로부터 파견된 투자프로젝트 매니저(Project Manager)가 상주하며 1:1서비스 제공
- ... 주한외국상공회의소 사무소 입주하여 근접 지원
- ... 외국인 투자업무 처리에 필수적인 회계/법률사무소, 통/번역회사, 은행, 관광회사 입주하여 일괄처리 지원